



---

# 51<sup>st</sup> CONFERENCE OF DIRECTORS GENERAL OF CIVIL AVIATION ASIA AND PACIFIC REGIONS

**IMPLEMENTATION OF  
EVIDENCE-BASED TRAINING (EBT)  
FOR FLIGHT CREW IN HONG KONG, CHINA**

Presented by, Hong Kong, China

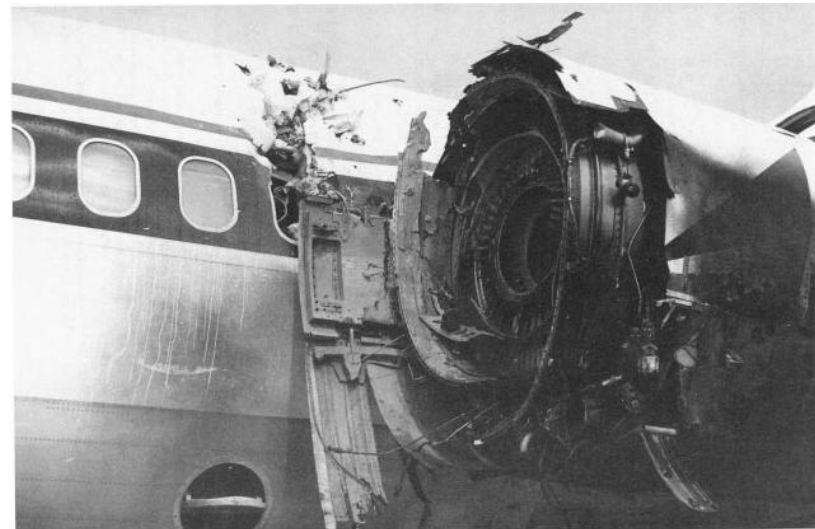
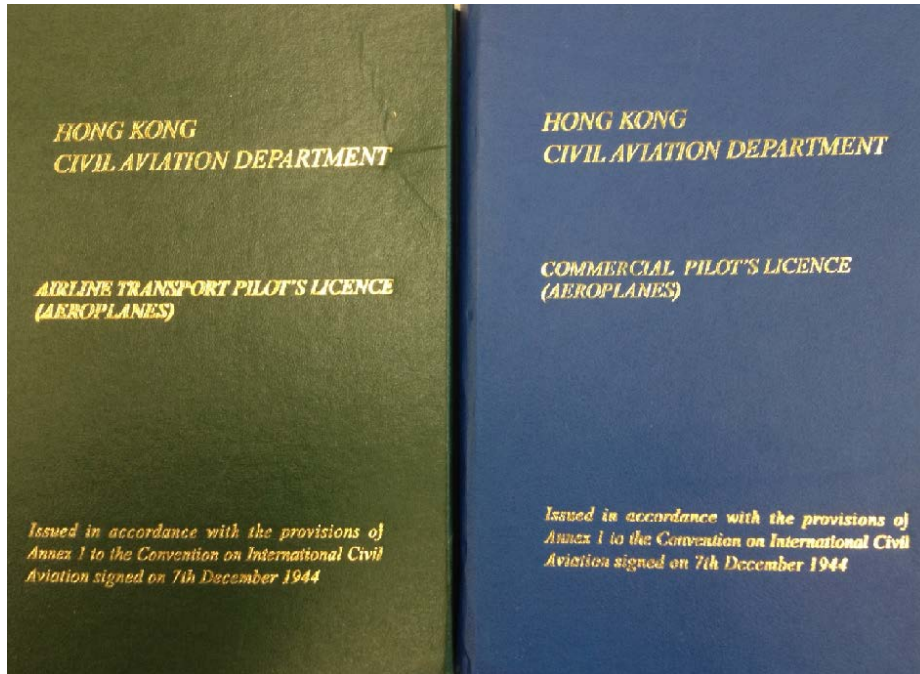
A decorative footer consisting of a green geometric pattern of overlapping triangles and polygons.

# Overview

---

- **Traditional Proficiency Checks**
- **Background of EBT**
- **EBT Concept**
- **EBT Implementation in Hong Kong, China**
- **Challenges faced by Regulators**
- **Summary**

# Traditional Proficiency Checks (PC)



# Background of EBT



# Background of EBT

ECAM à 02:10:05

```
AUTO FLT AP OFF
```

ECAM à 02:10:08

```
AUTO FLT AP OFF
F/CTL ALTN LAW
  (PROT LOST)
-MAX SPEED.....330/.82
AUTO FLT
REAC W/S DET FAULT
```



ECAM à 02:10:10

```
AUTO FLT AP OFF
AUTO FLT A/THR OFF
-THR LEVERS.....MOVE
F/CTL ALTN LAW
  (PROT LOST)
-MAX SPEED.....330/.82
AUTO FLT
```

ECAM à 02:10:15

```
AUTO FLT AP OFF
ENG THRUST LOCKED
-THR LEVERS.....MOVE
AUTO FLT A/THR OFF
-THR LEVERS.....MOVE
F/CTL ALTN LAW
  (PROT LOST)
```

ECAM à 02:10:19

```
AUTO FLT AP OFF
ENG THRUST LOCKED
-THR LEVERS.....MOVE
AUTO FLT A/THR OFF
-THR LEVERS.....MOVE
F/CTL ALTN LAW
  (PROT LOST)
```

F/CTL  
AUTO FLT

ECAM à 02:12:xx

```
AUTO FLT AP OFF
NAV ADR DISAGREE
-AIR SPD.....X CHECK
• IF NO SPD DISAGREE
-AOA DISCREPANCY
• IF SPD DISAGREE
-ADR CHECK PROC...APPLY
```

AUTO FLT  
F/CTL



# EBT Concept

---

- Strategic review and analysis
- Training programme: based on evidence
- Operational data of modern threats



# EBT Concept

---

## ➤ ICAO Document 9995: Manual of EBT

### Baseline EBT

Based on:

Operational data of  
jet aircraft of different  
generations.

### Enhanced EBT

Based on:

Operator specific data  
e.g. ASR, FDAP, LOSA

# EBT Concept

➤ Voluntary

➤ S  
p

➤ Q  
(P

▪

- Replace traditional proficiency checks  
(Regulatory Authorities' approval)



Service



# EBT Implementation in Hong Kong, China

---

- Experience sharing
- Not exactly the same as ICAO Doc 9995
- Training in addition to the required manoeuvre items

# EBT Implementation in Hong Kong, China

1

Evaluation Phase

2

Manoeuvres  
Training Phase

3

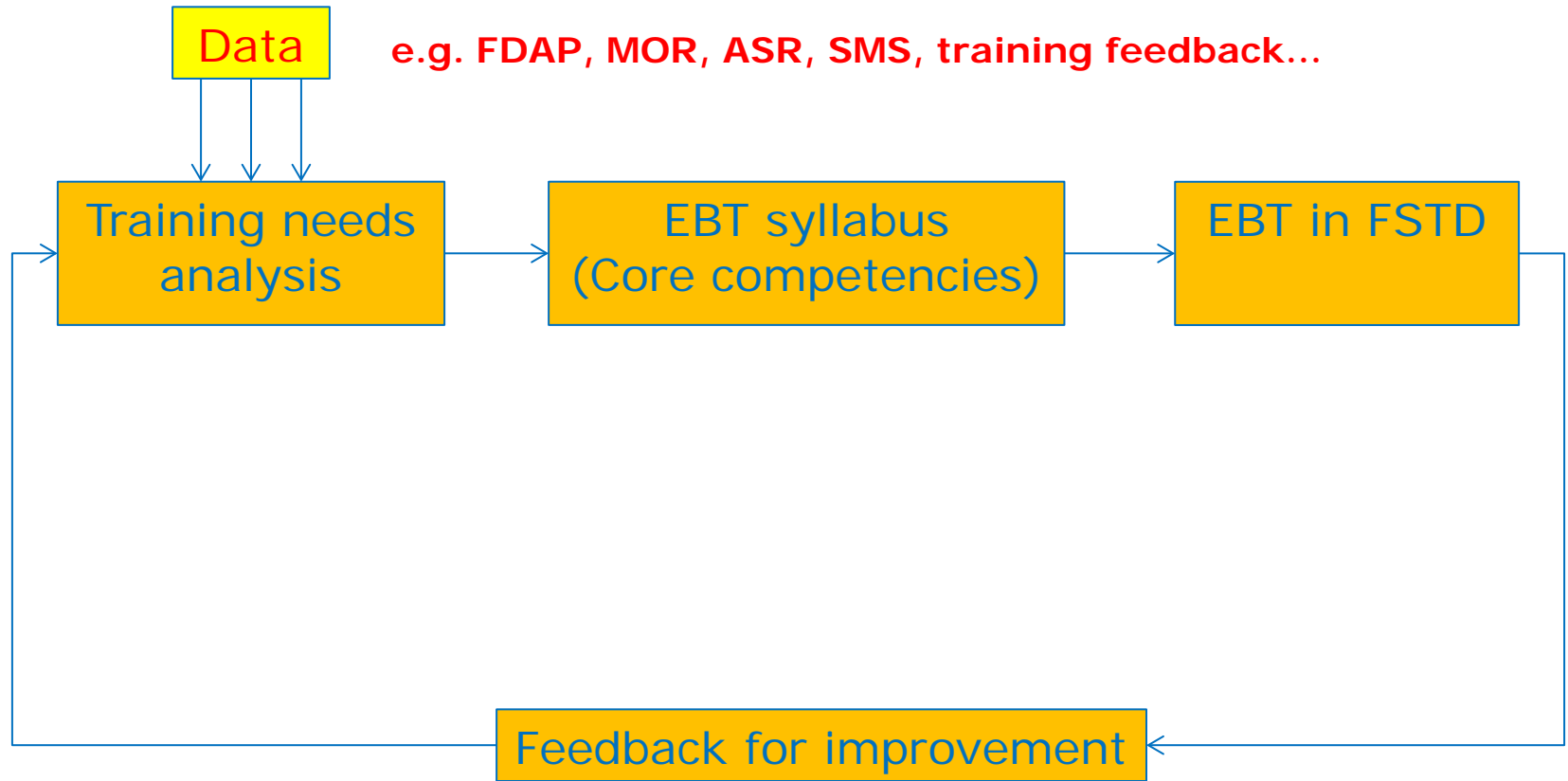
Scenario Based  
Training Phase

4

In Seat  
Instruction



# EBT Implementation in Hong Kong, China



# Challenges faced by Regulators

---

## ➤ 1. Factors affecting Core Competencies

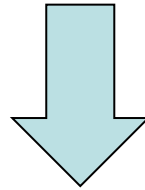
- Data validity
- Data interpretation

# Challenges faced by Regulators

---

## ➤ 2. Number of training attempts

Satisfactory/Unsatisfactory



May be many attempts  
(Train to competency)

# Challenges faced by Regulators

---

- 3. Operational Approval – Flexibilities
  - Different countries, different operators, different EBT programme



# Challenges faced by Regulators

---

## ➤ 4. Effectiveness of EBT programme

- An “improved level of safety” may not be directly related to EBT implementation

# Summary

---



# Summary

---

**Hong Kong, China  
embraces the concept of EBT**

**Experience Sharing**

---

# *Thank You*

